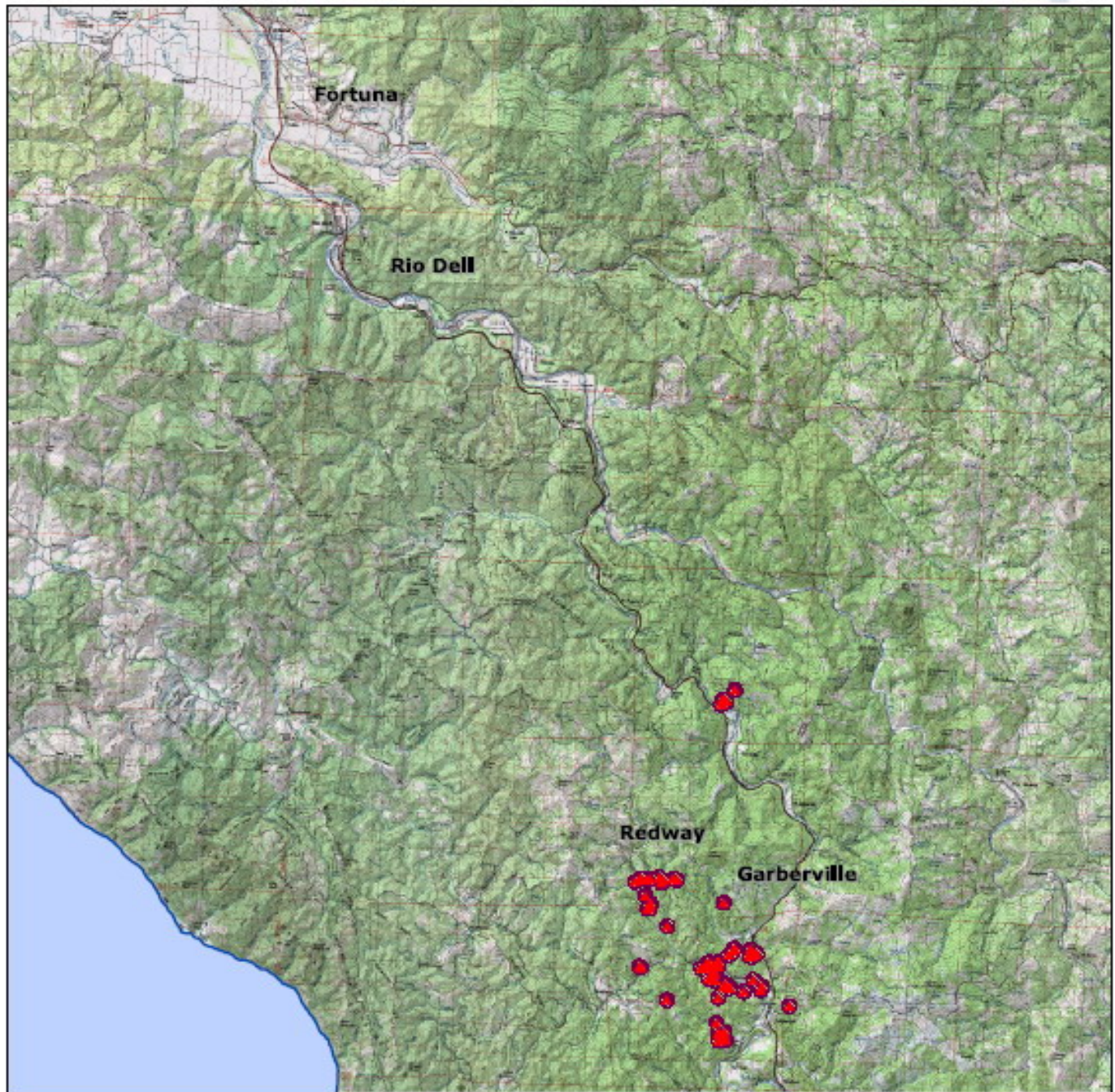







California
Oak Mortality Task Force

Areas of Sudden Oak Death Infestation from Best Available Field Information

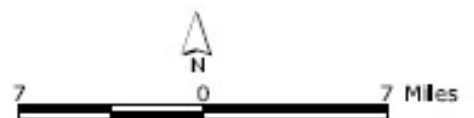


Humboldt County

-  Confirmed isolation of *Phytophthora ramorum*
-  1/4 mile buffer around confirmed SOD
-  County boundary

Data Sources:

- Confirmed isolations of *Phytophthora ramorum* provided by UC Davis, UC Berkeley, and CDFA. Nursery confirmations are not depicted.
 - USGS Digital Raster Graphics
- Sampling is occurring throughout the state.



Map Version 1.2 | Produced on 12/12/05 by UCB GIIF
<http://www.suddenoakdeath.org/>
<http://kellylab.berkeley.edu/SODmonitoring/>