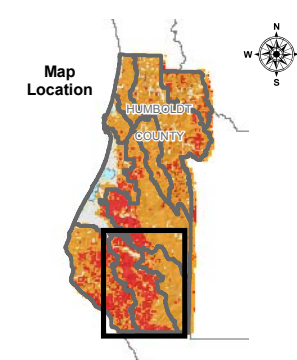
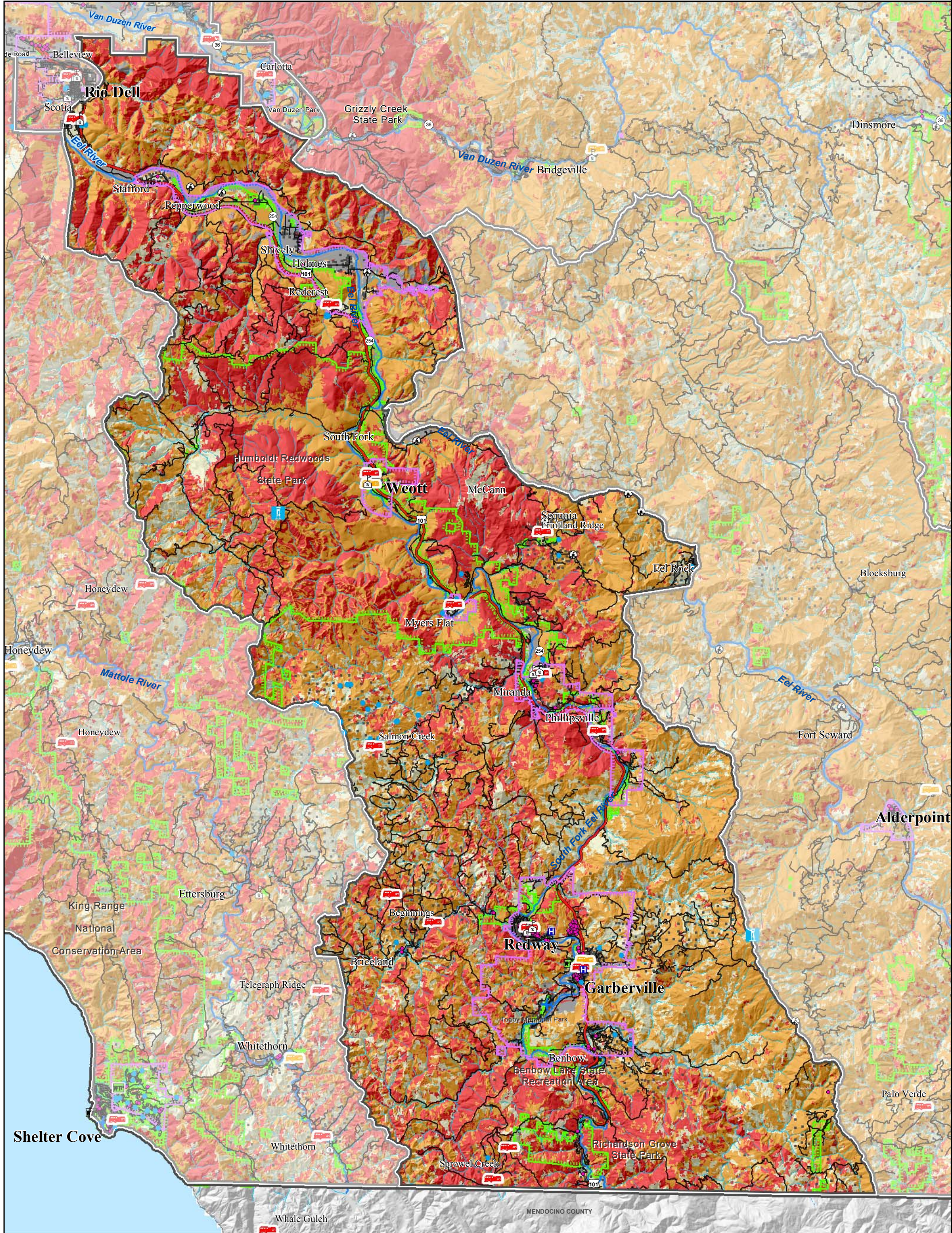


Fig. 3.20

South Eel Fire Planning Compartment



- Legend**
- RAMS Compartments
 - Emergency Response**
 - Local Fire Station
 - CDF Fire Station
 - Six Rivers Fire Station
 - Highways and Roads**
 - HWY 101
 - State HWY
 - HWY or Secondary Road
 - Local Road or Street

- Airports**
- Airport
- Landing Strip
- Hospitals and Clinics**
- Hospital/Medical Center

- Lookout, Lights, Radio**
- Lookout
- Radio/Beacon
- Public Facilities**
- Public Lands
- School

- Infrastructure**
- Regulator Station
- Gauging Station
- Water Treatment
- Water Tank or Source
- Wastewater Treatment
- Historic Locations
- City Boundary
- Community Planning Area

- Private Land Ownership**
- Commercial or Industrial
- Approx. Structure Location
- Hydrography**
- Major River or Stream
- Perennial Stream
- Intermittent Stream
- Fuel Hazard Rank**
- No Data
- Moderate
- High
- Very High

0 1 2 4 6 8 10 Miles
 RF 1:175,000

Local Fire Response, land ownership, and infrastructure data has been compiled by HCCDS. RAMS Planning Compartments were compiled by RNB. Fuel Hazard Rank (2004) from CDF FRAP is based on expected fire behavior for unique combinations of topography and vegetative fuels under a given severe weather condition (wind speed, humidity, and temperature).

This map is intended for planning purposes and should not be used for precise measurement or navigation.

Map compiled by Humboldt County Community Development Services (HCCDS), July 2004. Contact: cdevis@co.humboldt.ca.us